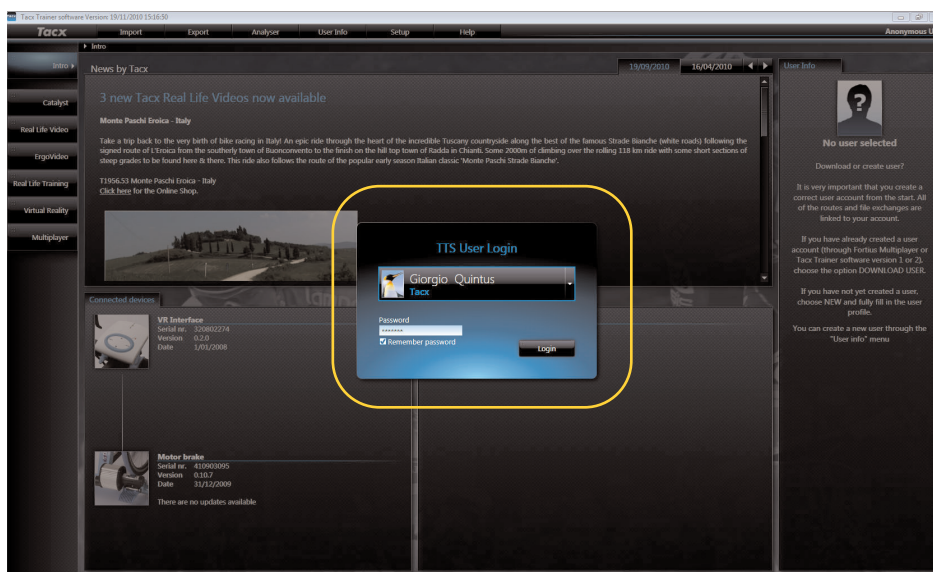


## Login account

As of version 3.1, the Tacx Trainer software features password secured user accounts. This way several users can share one PC, and it has also become possible to use your personal account settings on several PCs.

For existing users of version 2 and 3 who have also registered for BikeNet on the Tacx VR website, the login name and password are automatically copied from the user profile. New users are asked for a password the next time they use the software.

Logging in to a user account and/or modifying the user profile can also be done in the software's LIGHT version. In order to create a new user, the system needs to be connected to the Tacx trainer and the internet.

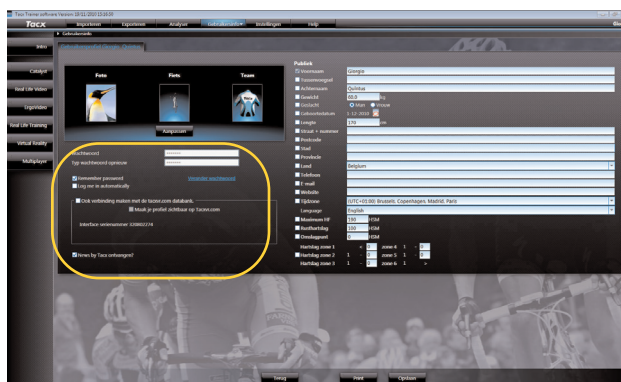


### Remember password

Use this when several users who trust each other want to log in on the same PC. The password will then be automatically filled in, in the pop-up with the login account.

### Automatic log in

'Log me in automatically' If you do not want to see the pop-up with the login account every time you start up the software, choose Automatic log in for your user profile



Do not use these tick boxes if you wish to protect your user profile.